



What is CHP?

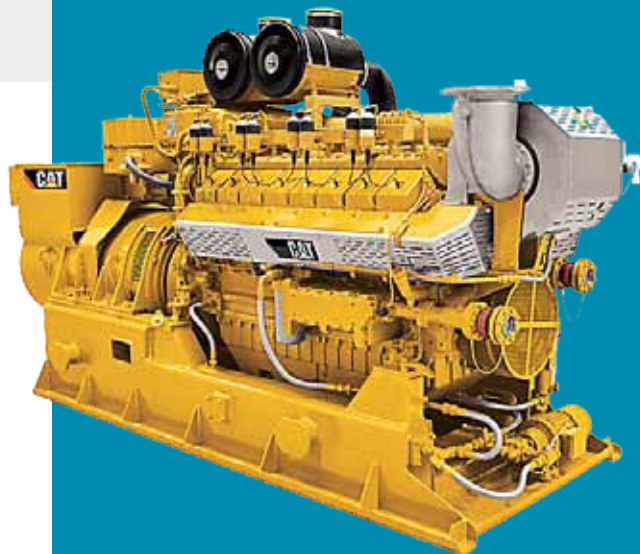
Combined heat and power (CHP) is a proven technology that uses equipment designed to generate both electric power and useful heat energy. CHP is used by many different facilities and is a key part of our nation's energy mix.

- ▶ Every CHP application involves the recovery of otherwise wasted thermal energy to produce useful thermal energy or electricity on site.
- ▶ CHP's high efficiency systems help make businesses more competitive by lowering their energy costs, reducing demand on the electricity delivery system, reducing strain on the electric grid and reducing the risk of power disruptions.

Kentucky CHP is a statewide program that promotes high-efficiency, combined heat and power (CHP) technologies to reduce energy costs, carbon emissions and spur new economic growth in Kentucky's industrial and manufacturing sectors.

Why Consider Investing in CHP?

- Lowers operating/energy costs
- Provides a hedge against future energy cost volatility
- Improves reliability of power supply
- Improves environmental performance



An 800 kW Natural Gas Fired CHP Unit





Is My Facility a Good Candidate for CHP?

- Do you pay more than \$0.06 kWh (all-in rate) for electricity?
- Are you concerned about future energy prices?
- Does your facility operate for more than 5,000 hours/year?
- Would there be a significant financial impact on your business if the power goes out for an hour or more?
- Do you have thermal loads throughout the year?
- Do you anticipate a facility expansion or new construction within the next 3-5 years?
- Have you already implemented energy efficiency measures and still have high energy costs?

If you answered “**yes**” to **3 or more** of these questions, you could be a good candidate for a CHP system!

Industrial Facilities, Contact:
Mary Breeding or Greg Higdon
Kentucky Association of
Manufacturers
(502) 352-2485
info@kam.us.com

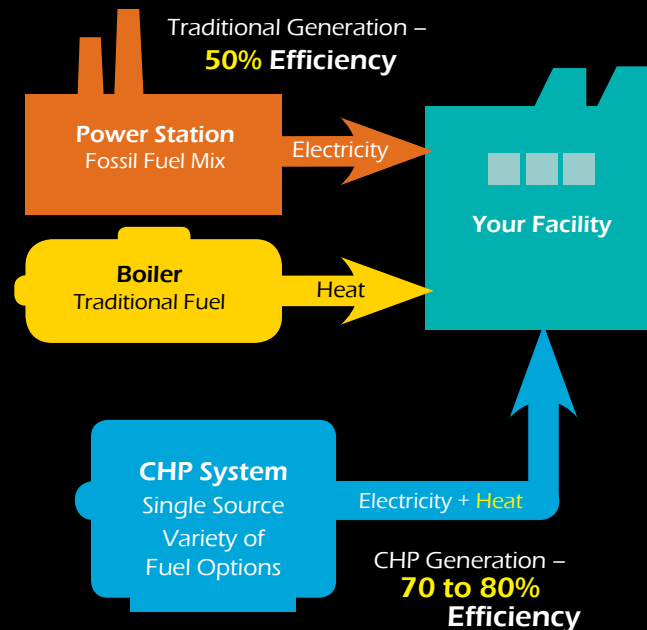
Commercial/Institutional Facilities, Contact:
Bill Lunsford
Kentucky Energy and
Environment Cabinet
(502) 564-7192
Bill.Lunsford@ky.gov

A Combined Heating & Power System Can Yield Energy Savings of

10 to 25%

and can help optimize efficiencies for your facility

Traditional vs CHP Generation



The Kentucky Energy and Environment Cabinet (EEC), KPPC - Kentucky Pollution Prevention Center and the Kentucky Association of Manufacturers (KAM), are working in partnership with the U.S. Department of Energy State Energy Program and the DOE Southeast CHP Technical Assistance Partnership to promote CHP technologies throughout Kentucky.